

# What's New in Aster Data nCluster 4.5

Traditional architectures, in which analytic applications run outside the database and data is moved from the database to the application for analysis, are unable to meet the demand for fast and deep analytics on large data volumes because of the massive data movement and hours to weeks of latency as well as poor performance that this architecture creates. To address this fundamental issue, Aster Data nCluster made big data analytics possible with the first data-analytics server, a massively parallel (MPP) database with an integrated analytics engine that allows analytic applications to be seamlessly embedded within the database to minimize data movement and maximize performance.

Aster Data nCluster 4.5 provides another significant step forward by making development and management of rich analytics fast and easy, enabling deep data exploration that scales to massive data volumes for richer and deeper business insights. nCluster 4.5 delivers enhancements for rapid analytics processing as well as the market's first comprehensive platform for easy and rapid development, deployment, and management of MapReduce-enabled analytic applications.

## Make Advanced Analytics Even Faster

Aster Data nCluster 4.5 delivers even faster performance for advanced big data analytics. Among the performance advancements are the following.

- **Support for solid-state flash storage** enables customers to leverage certified solid-state storage with nCluster, providing significantly faster data access than traditional physical storage.
- **Next-generation data loader** significantly accelerates the movement of data into nCluster with industry-leading throughput.

## Accelerate Creation of Analytic Applications

Aster Data nCluster 4.5 provides new capabilities that accelerate development, testing, deployment, and execution of analytic applications.

- **Aster Data Developer Express** accelerates development, validation, and deployment of big data analytic applications by delivering the first integrated visual environment for developing analytic applications with SQL and MapReduce. It makes it easy to develop, validate, and deploy big data applications by delivering an intuitive visual environment for creating SQL and SQL-MapReduce applications through integration with the popular Eclipse integrated development environment (IDE); includes wizards that automate integration of business logic with the data-analytics server; provides a desktop testing environment for local validation of application logic; and enables one-click push down of analytic applications into nCluster.
- **Aster Data Analytic Foundation** accelerates the development of rich analytics with a powerful suite of reusable building blocks for common analytic functions. These ready-to-use modules have been optimized to take advantage of the power of Aster Data's SQL-MapReduce framework for fast analytics, and represent the industry's first suite of functions optimized for MapReduce. Example functions include advanced time-series analysis, market basket analysis for advanced analytics in retail, and a range of statistical analysis functions.

## Highlights

- First visual integrated development environment for SQL and MapReduce analytic applications—Aster Data Developer Express.
- Suite of powerful building blocks for simplifying and accelerating development of analytic applications—Aster Data Analytic Foundation.
- Rich monitoring and easy management of data and analytic processing with the new Aster Data Management Console.
- Support for certified solid-state flash storage devices to accelerate storage performance.
- Next-generation loading architecture for leadership throughput to minimize time needed for loading data.

---

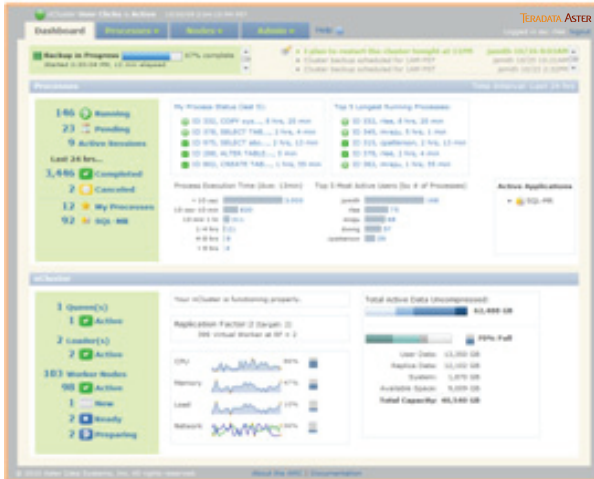
*“We’re very excited to take advantage of the new Aster Data Management Console which provides deep visibility into the performance of the system and provides a deeper level of situational awareness and historical perspective for our entire operations and engineering staff.”*

Don Watters, Principal Architect, Data Services MySpace



## Efficiently Manage Data and Applications

The new Aster Data Management Console (AMC) released with *n*Cluster 4.5 makes it easy to monitor and manage big data and advanced analytic applications with an intuitive interface, providing cutting-edge manageability of the *n*Cluster platform and the applications running inside. The rich interface provides comprehensive and deep visibility into data clusters and application metrics so that customers can view and manage analytic applications according to their business priorities. From dashboards for at-a-glance visibility into health and status of the system to detailed drill-down capabilities, the new AMC's intuitive graphical interface makes it easy to configure, manage and monitor the data application server.



The Aster Data Management Console (AMC) provides deep visibility, monitoring and control of both data and analytic application processing in an intuitive and powerful graphical console.

## About Aster Data

Aster Data is a proven leader in big data management and big data analysis for data-driven applications. Aster Data's *n*Cluster is the first MPP data warehouse architecture that allows applications to be fully embedded within the database engine to enable ultra-fast, deep analysis of massive data sets. Aster Data's unique "applications-within"™ approach allows application logic to exist and execute with the data itself. Termed a "Data-Analytics Server", Aster Data's solution effectively utilizes Aster Data's patent-pending SQL-MapReduce together with parallelized data processing and applications to address the big data challenge. Companies using Aster Data include Coremetrics, MySpace, comScore, Akamai, Full Tilt Poker, and ShareThis. Aster Data is headquartered in San Carlos, California and is backed by Sequoia Capital, JAFCO Ventures, IVP, and Cambrian Ventures, as well as industry visionaries including David Cheriton, Ron Conway, and Rajeev Motwani. For more information please visit [www.asterdata.com](http://www.asterdata.com), or call 1.888.Aster.Data.