

Aster Data *nCluster*[®] Cloud Edition

Big Data Analytics On Demand

Aster Data *nCluster* Cloud Edition brings the flexibility and agility of cloud computing to big data analytics. The Aster Data *nCluster* analytic platform is a massively parallel analytics engine that stores and processes big data analytics together with data to deliver breakthrough performance and scalability. *nCluster* Cloud Edition delivers leading analytic platform technology that is ideally suited to take full advantage of the elasticity and scalability of leading cloud infrastructure providers.

Aster Data *nCluster* Cloud Edition provides a multi-terabyte-scale, cloud-based option for analytic applications that enables data scientists, quantitative analysts, and analysts to:

- Start analytic application projects quickly
- Scale easily and incrementally to many terabytes of data without disruption
- Gain deeper insights into multi-structured data using Aster Data's patented SQL-MapReduce[®]

Start Quickly

Big data analytics projects don't have to be costly, long, and difficult to implement. *nCluster* Cloud Edition provides an easy approach to setting up an analytic platform on Amazon's EC2 and Persistent Store services. It can increase your speed to market, enabling you to deploy and expand computing capacity to deliver rapid loading and ultra-fast analytics on data within hours rather than weeks.

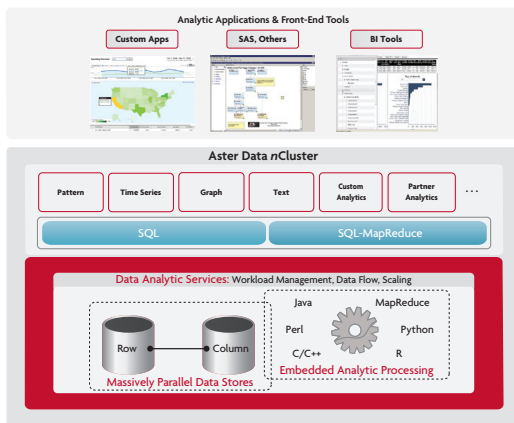


Figure 1: Aster Data *nCluster* Cloud Edition delivers big data analytics processing ideally suited to take full advantage of the elasticity and scalability of cloud infrastructure.

Scale Easily with No Downtime

Traditional solutions for big data analytics are expensive to operate due to high costs for scaling, administration, tuning, and maintenance. Aster Data *nCluster* Cloud Edition changes all of that with the most manageable on-demand analytic platform architecture built from the ground up for easy scaling and maximum resiliency. Live System Administration enables routine tasks to be performed while the system is online—without degradation of query performance. Even more, *nCluster* Cloud Edition is the only massively parallel processing (MPP) analytic platform that gives you Online Precision Scaling[™]—one-click provisioning to increase or decrease capacity or performance across functional tiers (query, loading, backup, etc.) independently to meet workload requirements.

Gain Deeper Insights with SQL-MapReduce

Companies who need to power data-driven applications such as digital marketing optimization,

Overview

Aster Data *nCluster* Cloud Edition is an on-demand offering of the Aster Data *nCluster* analytic platform. It provides a terabyte-scale, on-demand option for big data analytics in the cloud.

Key Benefits

- Get up and running quickly with on-demand infrastructure for analytics
- Dynamically adjust your analytics capacity to match your needs, when you need it
- Save time with Aster Data's easy, non-disruptive technology for scaling big data analytics in the cloud
- Align your costs and usage with pay-as-you-go licensing for the proven Aster Data analytic platform
- Gain faster, deeper insights to data and trends with SQL-MapReduce
- Rest assured your data is available 24x7 with built-in data replication and automated back-up

*“Aster Data *nCluster* Cloud Edition helps our business needs by providing cutting-edge SQL-MapReduce analytics. We're happy with the combination of Aster Data and Amazon Web Services along with the low cost of ownership.”*

Tim Schigel, CEO
ShareThis



machine data analysis, social network and relationship analysis, and fraud detection need more than just SQL statements or reports. Aster Data provides the first-ever massively parallel analytic platform in the cloud with Aster Data's patented SQL-MapReduce—a powerful parallel-processing framework for embedding application logic with data to accelerate data transformation and analysis. The Aster Data analytic platform combines the power and analytic expressiveness of MapReduce with the rich functionality and support of SQL—all in the cloud for rich analytic insights on-demand.

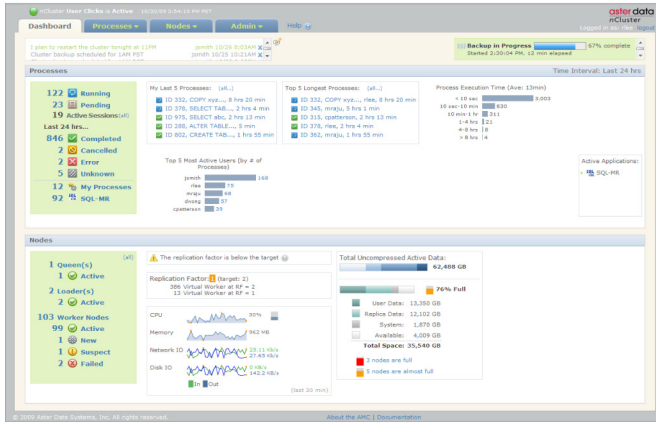


Figure 2: Intuitive browser-based system administration.

Key Features

Pay-As-You-Go – No upfront hardware, administration, or data center costs. Turn on and off any time to align costs with demand.

Online Fault Tolerance and Recovery – Uninterrupted query servicing; backup data replicas immediately takeover if a compute instance or storage becomes unavailable. In the event of a failure, the system can recover lost replicas or compute instances with no downtime.

Visibility and Control – Intuitive graphical administration console provides a browser-based, single-system interface to administrators.

Maximum Resilience – Built-in replication algorithms keep copies of data on local storage for higher performance and lower costs.

Automated, Parallel Backup – Fast, incremental, worry-free backup for increased reliability.

Online Precision Scaling – One-click provisioning to increase or decrease capacity or performance across multiple functional tiers (query, loading, export, etc.) with zero down-time. Keep costs low by only adding or removing what you need, when you need it.

Embedded Applications – SQL-MapReduce embeds MapReduce parallel analytics processing inside nCluster, enabling push-down of procedural code and analytic applications into the analytic platform where the data is stored for ultra-fast data processing and analysis.

Get Started Today

Contact us at 1.888.Aster.Data or info@asterdata.com to learn more or order Aster Data nCluster Cloud Edition.

About Aster Data

Teradata's Aster Data analytic platform is the market-leading big data analytics solution. The Aster Data analytic platform embeds MapReduce analytic processing for deeper insights on new data sources and multi-structured data types to deliver analytic capabilities with breakthrough performance and scalability. Aster Data's solution utilizes Aster Data's patented SQL-MapReduce to parallelize the processing of data and applications and deliver rich analytic insights at scale. For more information visit www.asterdata.com.

Copyright © 2011 Teradata Corporation. All rights reserved. Aster Data and SQL-MapReduce are registered trademarks of Teradata Corporation and/or its affiliates in the United States and other countries. Aster Data, the Aster Data logo, Aster Data nCluster, and Applications-Within are trademarks of Teradata Corporation. All other brands and trademarks referenced herein are acknowledged to be trademarks or registered trademarks of their respective holders.

Technical Specifications

- **Cloud Infrastructure** – Supports Amazon Web Services (EC2) and Persistent Store platform
- **Drivers and APIs** – SQL, OLE DB, ADO.NET, ODBC, JDBC, Psycopg (Python)
- **SQL Standards** – ANSI SQL-92 compliant with SQL-99 and SQL-03 extensions
- **Business Intelligence and Data Integration** – compatible with leading business intelligence and data integration tools
- **Hadoop Data Connector** – Two-way connector for rapid, parallel data transfer between Aster Data nCluster and Hadoop